



Photography Guide for Teledermatology

head & body

head, face, scalp



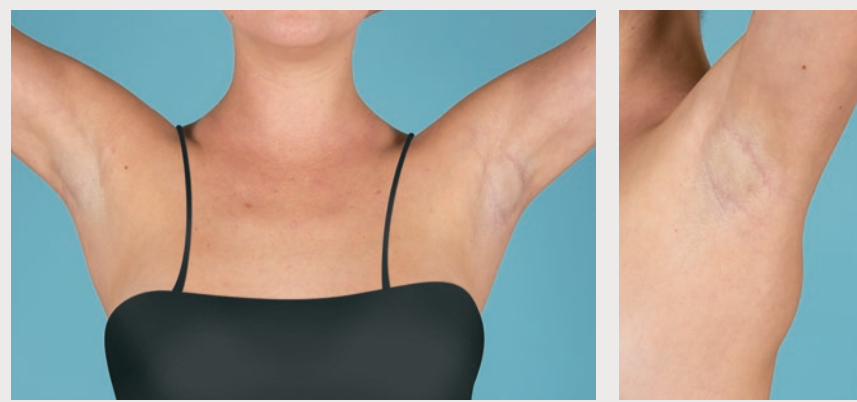
Preparation: Remove jewelry and makeup. Restrain hair. **Positioning:** Seated. Tuck chin slightly. Minimize rotation and tilting. Neutral expression.

knees, elbows



Preparation: Remove applicable clothing. **Positioning:** Standing.

axilla



Preparation: Remove jewelry and deodorant, if visible. Restrain hair. **Positioning:** Standing, arms raised.

genitals, buttocks



Preparation: Remove clothing. **Positioning:** Lithotomy pose for female.

trunk



Preparation: Remove clothing from upper body. Remove jewelry. Restrain hair. **Positioning:** Standing, back straight. Minimize rotation and leaning.

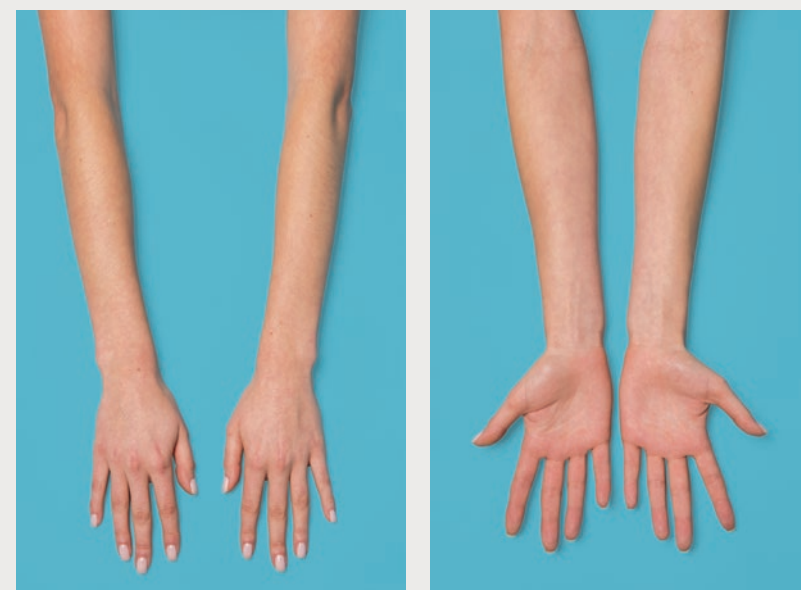
upper extremities

upper arms



Preparation: Remove applicable clothing and jewelry. Restrain hair. **Positioning:** Standing, arms at side, palms facing front.

lower arms



Preparation: Remove applicable clothing and jewelry. **Positioning:** Seated, rest arms on table.

hands, fingernails



Preparation: Remove jewelry. Roll up sleeves. **Positioning:** Seated, rest hands on table.

lower extremities

legs: anterior and posterior



Preparation: Remove shoes, socks and applicable clothing. **Positioning:** Standing, feet slightly apart.

legs: lateral and medial



Preparation: Remove shoes, socks and applicable clothing. **Positioning:** Bend knee of leg furthest from camera and move foot forward.

feet, toenails



Preparation: Remove shoes, socks and applicable clothing. Brush debris from bottom of feet. **Positioning:** Keep feet close together. Have patient kneel for soles of feet.

photo tips

- Check images for focus, coverage and exposure.
- Hold camera steady with both hands.
- Center anatomy in frame. Include only clinical information.
- Use Macro mode for close-up photos.
- Keep camera level with anatomy; do not angle up or down.
- Keep the camera zoom consistent.
- Use the flash, but not closer than 12 inches for macro images.
- Shoot against a featureless backdrop, such as a wall or door.
- Compression/Image Quality setting: JPEG Basic or Normal

necessary sequence of images



distribution

regional

close-up showing surface features

complementary views

If involved	→ include	look / ask include
Hands	Feet	Elbows/Knees
Feet	Hands	Groin
Elbows	Knees	Scalp
Knees	Elbows	Scalp
Scalp	Face	Knees, Elbows
Popliteal fossa	Antecubital fossa	Neck, Face, Hands
Antecubital fossa	Popliteal fossa	Neck, Face, Hands
Nail (any)	All nails	Oral Mucosa
Groin	Buttocks	Hands & Feet
Face (Eyebrows)		Scalp
Oral Mucosa		Genitals